

Welcome to Destinator³



Your quick start guide to providing you with a system of personal road navigation – **Destinator³**! Let us begin.

– Please read the Warning and Disclaimer First –

1 Warning and Disclaimer

The driver should not operate **Destinator³** while the vehicle is in motion. **Destinator³** should only be used by the Passenger while vehicle is in motion. Driver assumes complete responsibility to operate the vehicle in a safe and courteous manner while obeying all signs and traffic regulations. Destinator is not responsible for any improper use of the **Destinator³** nor any consequences arising from its use.

Serial Number

2 Package Contents

- Installation and Map Data CD(s)
- **Destinator³** User Guide on Installation CD – Not in Distributor Version
- GPS Receiver and connecting cable (only included in the full package bundle)
- In-Vehicle Power Adaptor (only included in the full package bundle)
- Canvas bag for **Destinator³** contents (only included in the full package bundle)
- Warranty Card (only included in the full package bundle)

Any shortages should be reported to your Distributor or Supplier, immediately.

Note: The content of this document constantly changes, to reflect the latest changes in procedures, screens, buttons, icons, general improvements, and updates to the Destinator³ software and maps.

3 Installing Destinator³

3.1 Prerequisites

Before you install **Destinator³**, please confirm:

- Your PDA has a minimum 32 MB RAM and 96 MB External Memory.
- Your PC has ActiveSync loaded, running and is connected to PDA.
- Your PC has a minimum of 300 MB free for transferring and storing temporary files.

Note: In this Quick Guide, PDA refers any (Windows Operating System) Pocket PC device.

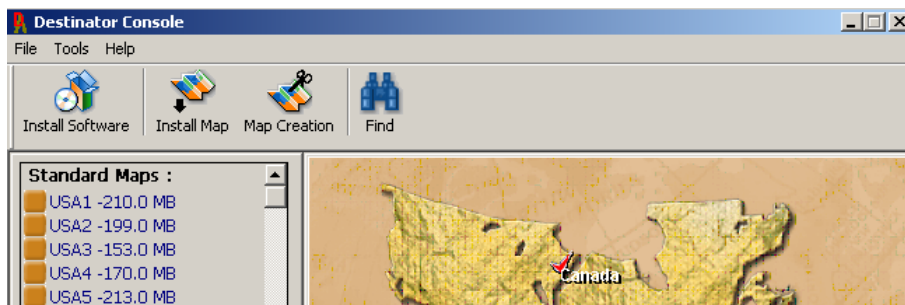
3.2 Software Installation Procedure

This is a three-part procedure:

- Installing **Destinator³**
- Installing the Map(s)
- Activation and Registration

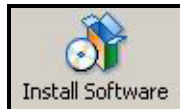
To load **Destinator³** navigation software from your CD-ROM drive on your PC to your PDA:

1. Ensure the PDA device, is plugged into the cradle, and powered up.
2. Check that Microsoft ActiveSync™ (supplied with your PDA) is installed on your desktop PC.
3. Check that ActiveSync has established a connection to the PDA.
4. Insert the Destinator Installation CD into the CD-ROM drive in your desktop PC. The start-up screen appears automatically.
5. The **End-User License Agreement (EULA)** opens – Select **Accept**.
6. The **Destinator Console** opens. From here, you will be able to select your language of choice and the location where, **Destinator³** will install maps and some new features.

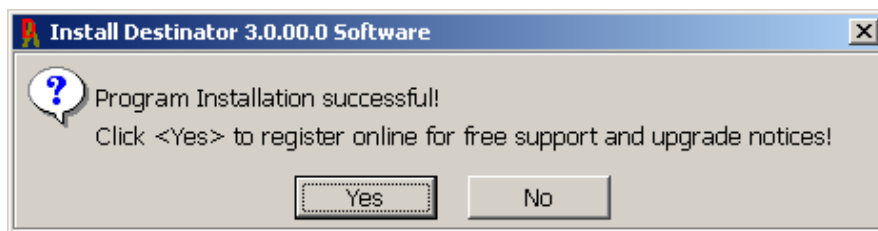


7. Select the language of your choice. **Tools > Language**.

Destinator Quick Guide



8. Select the Install Software button
9. The pre-loader is automatically loaded on to the PDA.
10. **Destinator³** automatically checks if there is a previous version installed and will prompt you to remove it before installing **Destinator³**, press the **Yes** button to completely remove it.
11. Then proceed with installation and follow the pop up prompts.
12. When installation is successfully completed, a popup dialog appears, **Program Installation successful!**



13. Press **No**, **DO NOT REGISTER ONLINE**, Yet.
14. You still need to install a map before you can register and Activate **Destinator³**.

4 Install the Map(s)

Installs the map(s) into the PDA memory card using the following instructions:

1. Select **Change** to select where to install Maps. Main Memory or Storage Card (CompactFlash or SD card), or Removable Disk (External Reader).
2. Select the map(s) you wish to load by placing the mouse cursor on the map index (refer to Map Loader Screen), and select the



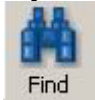
Destinator Quick Guide

desired map(s). The software will place a **check mark** ✓ on the selected map(s). Right-click the mouse to display an enlarged view of the selected map.

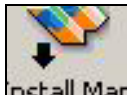
Note: Have memory limitations? Create your own personalized maps. Refer to Destinator User Guide – Create Your Own Maps.



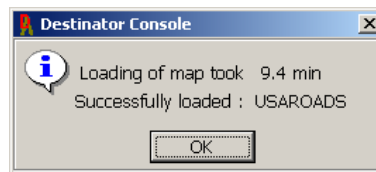
3. If you do not know the map(s) to be loaded, you may use the **Find**



to locate the map(s). The **Find** utility has three tabs - **Index**, **Search**, and **ZIP code** (Only for USA and Europe). Use the **Index** tab if you know the city or state. Use the **Search** tab for a broader search. Use the **ZIP code** tab if you know the ZIP codes.



4. Select **Install Maps**. Then press the **OK** button on the popup prompts to install the map(s).



5. Press **OK** to exit from Installing Map.

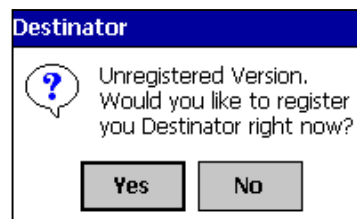
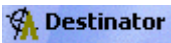
5 Activation

5.1 FIRST TIME REGISTRATION

1. After maps have been installed, you will have to register your software in order to activate it. **Destinator³** will not run unless it is registered.

2. Registration Procedure:

- Go to your PDA
- Select **Programs**
- Select **Destinator**
- Destinator Activation screens pop up with:



Destinator Quick Guide

Please note- if you do not register you will not be able to use your **Destinator³**.

3. Click on **YES**.
4. The **Destinator Activation Page** displayed. Do not enter anything on this screen yet. Leave it as is.
5. Go back to your PC. To activate your copy of **Destinator³**, Type the link manually into your browser:
<http://activate.destinator1.com/>
(Now you can register online).

Destinator Activation 10:59 ok

Destinator³ Activation

Congratulations on your Destinator purchase!

Please enter your **License Key**
(found inside the CD jacket):


Example:
12345-67890-abcde-fghij-klmno

Please refer to the **Quick Start Guide** for assistance with the activation process.

Device ID:
352f443ee155

Cancel Next

5.2 Registration - Destinator Community

1. Once the main page of **Destinator Community** is displayed click on:

2. The registration screen displayed. Please fill-in all the required fields.
3. If you need **Help with Registration** - select **Need help with installation? Click here!** link.
4. By registering your product properly, you will have access to updates, FAQs, skins, and other beneficial features and add-ons to your Destinator. Make a note of your **Login Name** and **Password** and email address entered and keep it in a safe place.
5. When you complete the registration screen, the system prompts you to enter your License Key. You can find the **License Key** on the label inside your CD box. Type the license key in the field displayed and press **Next**.

Destinator Quick Guide

6. The system then prompts you to enter the **Device ID**. The device ID is found on your PDA at the bottom of the screen. You will see:
Device ID:
xxxxxxxxxxxxxx
7. Type the Device ID number in the **Device ID** field in the Web Page. Make sure that all the characters are lowercase.
8. Once the Device ID has been entered, the system displays your **Activation Key**.

Destinator Community

Home | Profile | Activations | Upload Package | Search | FAQ | Log Out

Activations


Below is a list of your activated licenses on a device. If you have multiple devices, you can select a different deviceid in the Drop-down box and click "View" to see related licenses.

Select Device:

[Activate Product]

Your Registered Licenses

Activation Key: 5a130840ee84
266ee-b5080-02000-9fa00-c5c44
Oct 21, 2003
Boxed - Full, North America All, No Hardware, Destinator3 Release 1
Expiry Info: Expires on Nov 20 2003 at 23:59:59

9. Go back to your PDA. Click on the keyboard icon . The soft keyboard appears.
10. With the soft keyboard, enter the **License Key** found on the label inside your CD box, in the field **License Key** of your PDA.
11. Once the key is entered, double check it to ensure it is correct.
12. Then click on the keyboard icon, the keyboard is now hidden.
13. Click on **Next**.
14. The system now prompts you for your **Activation Key**. Using the soft keyboard enter the Activation Key displayed on the web page.

Destinator Quick Guide

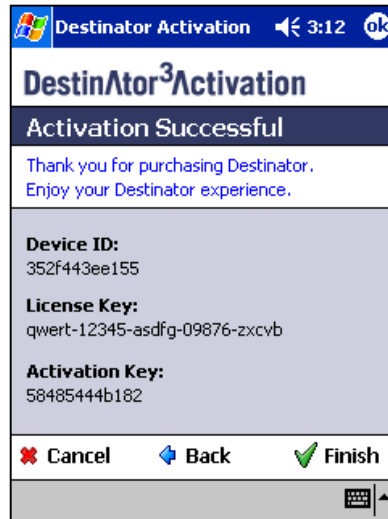
15. Once you entered the Activation key, the PDA should display: **Activation Successful.**

16. Click on **Finish** then **Done**,

17. Return to the **Destinator Community registration page** and **Log Out**.

Important Note:

Destinator³ is copy protected and keeps track of your Device ID.

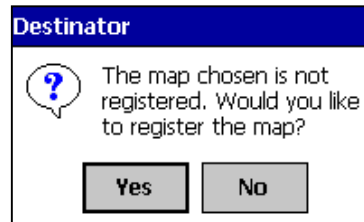


If you change PDA's then your activation key will no longer be valid and you will have to call your Distributor or [Destinator Technical Support](#) for another key.

5.3 Previously Registered

If you have **Previously Registered** or have purchased extra maps, you will need additional activation key(s).

On the PDA, Press **Yes** on the Pop up screen. On the Destinator Activation, press **+New**. This starts the registration process. On the Destinator Activation Congratulations Page, enter the **License Key**, press **Next**.



On the Destinator Community Login Page, enter your **Login Name and Password**. From the Destinator Community Menu Bar select **Activation**, and follow the on screen prompts. Once Activation Key generated, complete Activation procedure on PDA.

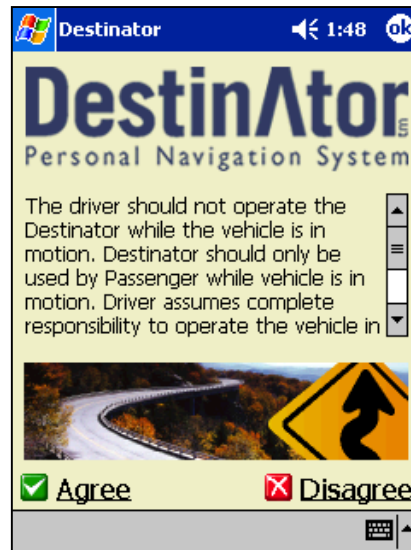
For more details, refer to the Destinator User Guide found on the Destinator Install CD under Help.

6 Start up

Power up your PDA and launch **Destinator³**.

On the opening screen, click on the **Agree** button. The **Agree** button confirms, that you, the user, agree to abide by the terms of the included in the **End-User License Agreement (EULA)**.

Destinator³ is now fully activated and ready for use.



However, before you continue let's set up some preferences. It's easy, just go to the **Options** menu to configure and set your preferences.

Play around and experiment with some of the options to see what you like.

The options include:

- **General Settings** - sets default for Metric or Imperial System and the On Map information. Default – Imperial.
- **Map Settings** - sets Map preferences, zoom and Map font size.
- **Alerts Settings** - sets Voice and Visual Prompts and Alerts.
- **Look and Feel** - sets the voice prompts and skin (appearance of Destinator – Icons and Scroll bar). Defaults are selected.
- **Help** - includes an abbreviated file with very basic Destination information. Refer to Destinator User Guide for more help.
- **Play** - to record or play previously recorded routes.

*The most important setting, for now, is **Route Settings**. Ensure that these are set to **Navigation Mode** and **Quickest** routes. All route calculations are based, on these selections.

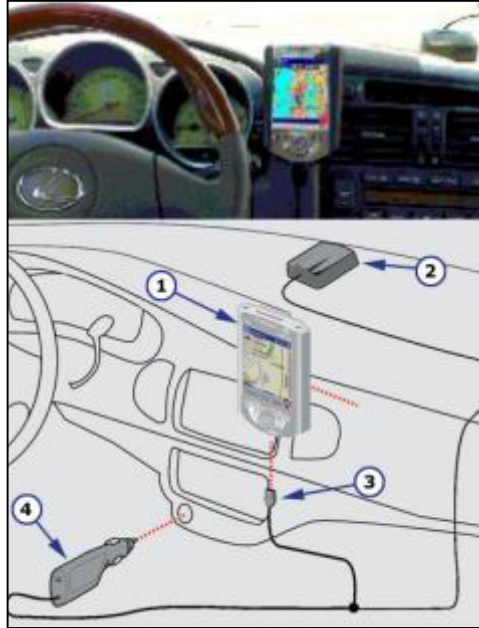
Do not use Planner Mode. This displays the planned route details only. Your actual progress, will not be shown, until you re-enter the navigation mode.

7 Vehicle Installation

Choose a suitable location on the dashboard to install the PDA device. Ensure that it does not obstruct the driver's view of the road and away from the vehicle controls and safety devices (1).

Check that the PDA, is securely attached to the dashboard. Place the GPS antenna/receiver on a flat surface on top of the dashboard (2).

The back of the GPS antenna receiver has a magnetic surface. It can also be mounted, on the roof of the vehicle to provide clearer reception, or to a magnetic portion of the dashboard. Secure the GPS and trailing cable with the supplied suction cup, firmly, to the dashboard or Window, to prevent possible injuries, in case of emergence emergencies.



1. Connect the COM connector cable (3) to the PDA and GPS.
2. Plug in the Cigarette Lighter Adaptor (4).
3. Power up the PDA and GPS Receiver.
4. Launch the Destinator Software.
5. Check that the Cigarette Lighter adaptor power LED is ON.

Note: Disconnect the adaptor from the cigarette lighter socket when not using Destinator. The GPS may take a few minutes initially to find its current location – ensure that you have a clear view of the sky.

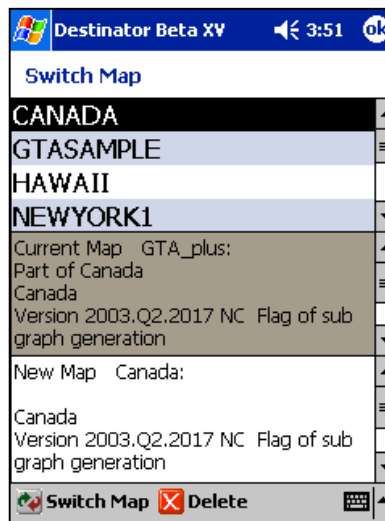
Now, you are ready to start your journey using Destinator³. Enjoy!

8 Selecting the Default Map

You may load several maps onto the memory card. However, you must select which map **Destinator**³ should use as its default.

Select the map using the following procedure:

1. Select **View** (bottom toolbar).
2. Select **Switch Map**, from the View menu to display the Switch Map screen. The software lists all available maps loaded onto the Main Memory and memory card(s).
3. Select the appropriate map from the list (highlighted bar) by using the stylus, or the scroll button on the PDA device. The field **New Map** displays the name of the selected map.
4. Press the **Switch Map** button. The main screen will then display the new map.




You are now ready to install the Destinator Navigational System!

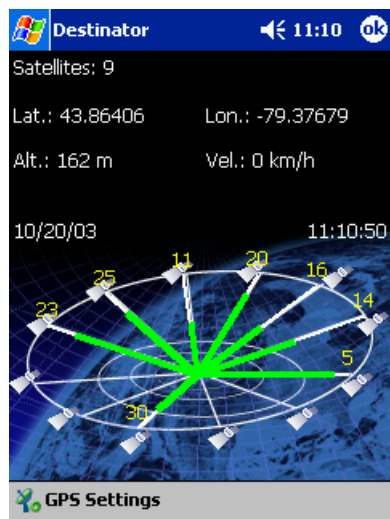
9 GPS Setting Up

Initially the GPS may take a few minutes to find its current location. Ensure that you have a clear view of the sky.

Destinator³ uses GPS signals to pinpoint your vehicle's location. The software remembers your last location. However, to continually update your vehicle's location, the software must refresh the GPS signals.

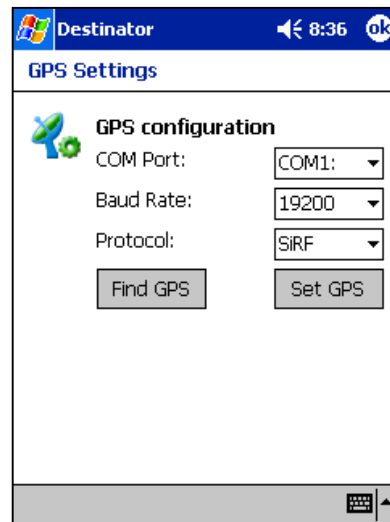
In Navigation mode, the software automatically acquires GPS signals and updates your vehicle's location.

If you have your own GPS eg: Bluetooth, or need to adjust or change your GPS Antenna, select **Options**, then **GPS Status** and then select  **GPS Settings**.




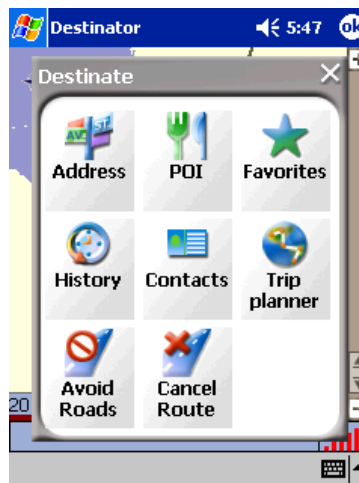
GPS configuration menu:

1. **Find GPS** - Automatically searches to find which type of GPS is the **Port**, and the correct **Baud** rate. Use this if you have your own GPS eg: Bluetooth.
2. **Set GPS** - Saves GPS Configuration.

The screenshot shows the 'Destinator' application window with a status bar at the top displaying 'Destinator', a speaker icon, the time '8:36', and an 'ok' button. The main display area is titled 'GPS Settings' and contains a 'GPS configuration' section. This section has three dropdown menus: 'COM Port:' set to 'COM1:', 'Baud Rate:' set to '19200', and 'Protocol:' set to 'SIRF'. Below these are two buttons: 'Find GPS' and 'Set GPS'. The bottom of the screen has a grey bar with a small icon.

10 Navigate To an Address


1. Select **Destinate** button on the bottom toolbar.
2. Locate and select the **Address** button.
3. The default **City > Street > House** screens appears.
4. Alternatively, select the  button (top right in the toolbar).



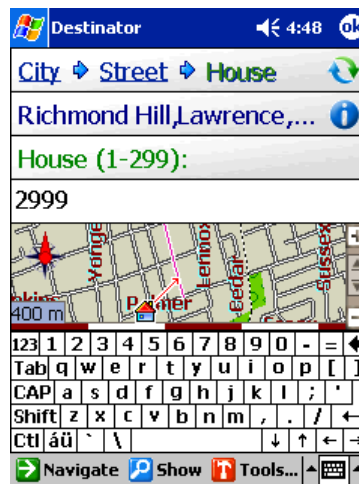
5. Select **Street City**  button.
6. Use the keyboard to enter the first few characters of the **Street** name. The scroll list will update accordingly. Select the **Street** name from the list.



7. Select **City** to display a list of city names for the selected street. Select the **City** name by using the scroll button on the PDA or by using the keyboard.

Note: Pressing the  button will show the GPS Position, Latitude and Longitude of the selected Street or City.

8. Select **House** to display a list of Numbers for the selected street. The software displays the soft keyboard and the range of house numbers.
9. Enter the **House Number** using the keyboard. Destinator will not allow you to enter a house number that is outside the displayed range.



Destinator Quick Guide

Note: Not all streets are mapped to the house level. In such circumstances, the software will display **House data not found. You can still navigate to a nearby address which the mapping recognizes or choose the previously selected City and Street.**

10. To view your destination on the main map, select **Show** button.
11. To start route calculation, select **Navigate** (bottom toolbar).
12. From your current GPS position, the route (in blue) is calculated and displayed in the main screen (normal map view).
13. To select an alternate driving view, select **View > Driving Directions**. This will display the route in list form.
14. To return to the main screen and normal view, select **OK**.

11 Navigate To POI

POI (Points of interest) on a map represents places of interest or importance. POI navigation is especially handy when you need to find a facility, attraction or amenity by type, rather than by its address, eg: **Bank, Restaurant, or Hotel**.

1. Select **Destinate** button on the bottom toolbar.
2. Locate and select the **POI** button.
3. Locate and select **Banks** from the POI **Category List**.



Note: If the check box is checked eg: **Banks are displayed on the map. Ensure that **Banks** is highlighted (selected).**

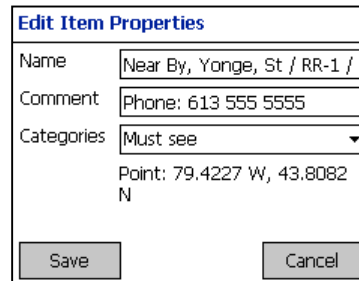
4. Select **Item**. All the **Banks** in your



Destinator Quick Guide

immediate area (current GPS position) will be listed, the closest being first.

Note: If you want to save a specific location in your Favorite Folder, select **Tools > Favorites and save it into the selected Favorite folder in **Categories**.**



The 'Edit Item Properties' dialog box contains the following fields and controls:

- Name:** Near By, Yonge, St / RR-1 /
- Comment:** Phone: 613 555 5555
- Categories:** Must see (dropdown menu)
- Point:** 79.4227 W, 43.8082 N
- Buttons:** Save, Cancel

5. To view your destination on the main map, select **Show** button.
6. To start route calculation, select **Navigate** (bottom toolbar).
7. From your current GPS position, the **route**, (in **blue**), is calculated and displayed in the main screen (normal map view).

12 Navigate To a Contact

You may use this feature to navigate to any addresses stored in your personal Contacts list in Microsoft ® Pocket Outlook.

1. Select **Destinate** button, on the bottom toolbar.

2. Locate and select the **Contacts** button.

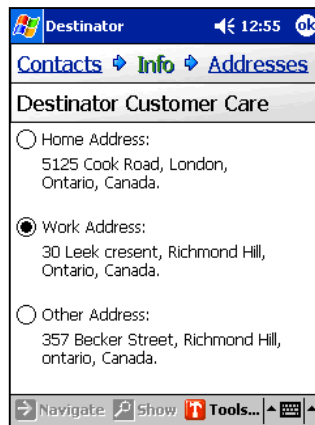


The 'Contacts' list shows the following items:

- Contacts > Info > Address
- Destinator Tech Support
- Destinator Tech Support (highlighted)

3. Select a **Contact** from the list, ensure that it is highlighted (selected).

4. Select **Info**, to display the address(es). Select from Home, Work, or Other Address.



The 'Destinator Customer Care' contact details screen shows the following information:

- Destinator** (header)
- Contacts > Info > Addresses** (header)
- Destinator Customer Care** (title)
- Home Address:** 5125 Cook Road, London, Ontario, Canada.
- Work Address:** 30 Leek crescent, Richmond Hill, Ontario, Canada. (Selected with a radio button)
- Other Address:** 357 Becker Street, Richmond Hill, ontario, Canada.
- Buttons:** Navigate, Show, Tools...

5. Select **Address** to display a list of possible matching addresses. Select the correct address.

6. If a mistake or error is made, return to previous screen(s) with **Contacts** or **Info**.

7. To view your contact destination on the main map, select **Show**.

Destinator Quick Guide

Note: If you wish to save a specific Contact in your Favorite Folder, select **Tools > Favorites** and save it into the selected Favorite folder in **Categories**.

8. Tap or select **Navigate** button on the bottom toolbar.
9. The route (in **blue**), is calculated from your current GPS position and displayed in the main screen (normal map view).

13 Technical Support

If you have any questions in reference to installation of **Destinator**³, please contact **Destinator Technical Support** at: Tel: (905) 764 7611 email: support@destinator1.com

See **Destinator FAQ** at: <http://www.destinator1.com/faq.emb?id=>

14 Destinator Community

Welcome to Destinator Community, a place for you to personalize your **Destinator**³ through specialty **Destinator packages**, such as skins (look-and-feel) and sharing **Favorites**.

To access the community you must be a registered user. Here you are able to share, upload, or **Download** new and different Packages, post (**ADD**) comments and interact with other fellow Destinator's.



Take your time and browse, you are sure to find something of interest

Enjoy the experience and we hope to see you, on one of your many journeys.